



# Main Features

## Dimensions

Width: 27,5 cm.  
Height: 8,6 cm.  
Depth: 1,17 cm.

## Weight

Gr. 290 ca.

## Displays

Fare counter:  
6 Digits Red High-Luminosity Led  
Extra counter:  
6 Digits Red High-Luminosity Led  
Illuminated Front Text  
1 Digit tariff index

## Power Supply

From 9 to 16 Volts

## Temperature

From -15 to 70 °C.

## Relative Humidity

95%

## Mechanical Strength

3 g

## Distance Unit

From 10 cm. to 6553 meters  
Step 10 cm.

## Waiting Time Unit

From 0,1 sec. to 6553  
Step 0,1 sec.

## Totalizer Mode

Dataflash 1Mb  
- 45 + 45 Statistic Memory  
- 12 x 45 Monthly Statistic  
- 50 x 45 Statistics for each Driver

## Tariff Structure

63 Smart and fully independent Tariffs  
+8 Night Tariffs  
+8 Holiday Tariffs  
+4 Autofare Tariffs  
+4 Autidistance Tariffs

## Tariff Choice

Manual  
Radio  
Automatic at pre-programmed:  
- Distance(s)  
- Time(s)  
- Date(s)  
- Fare(s)  
- Amount(s)  
-GPS Geofencing

## Tariff Program Change

Manual by Key  
Via Radio  
By Programmer  
By Chip Card  
By Infrared Programmer  
By GPRS Modem

## Peripheral Connections

Printer  
Magnetic Card Reader  
Chip Card Reader/Writer  
Infrared Passenger Sensor  
Mobile Data Terminal  
Modem 3G  
Cellular Phone

## Embedded Peripherals

3G Modem  
GPS  
Bluetooth

## Communications Ports

Internal COM1 and COM2  
RS232 +/- 12 Volts STD  
4 Input/Output TTL level

## Communications Protocols

Contax 2-5  
Mobilstar  
RomaNet  
Telecom It. (Upgradable)

## Operative Firmware

Upgradable firmware on Flash

## Transducer

Mechanical Hall Effect or Internal adapter for electronic speedometer up to 100.000 l/km

## Power Outputs

1 Roof Light 25 Watts  
4 Programmable power outputs 5 Watts

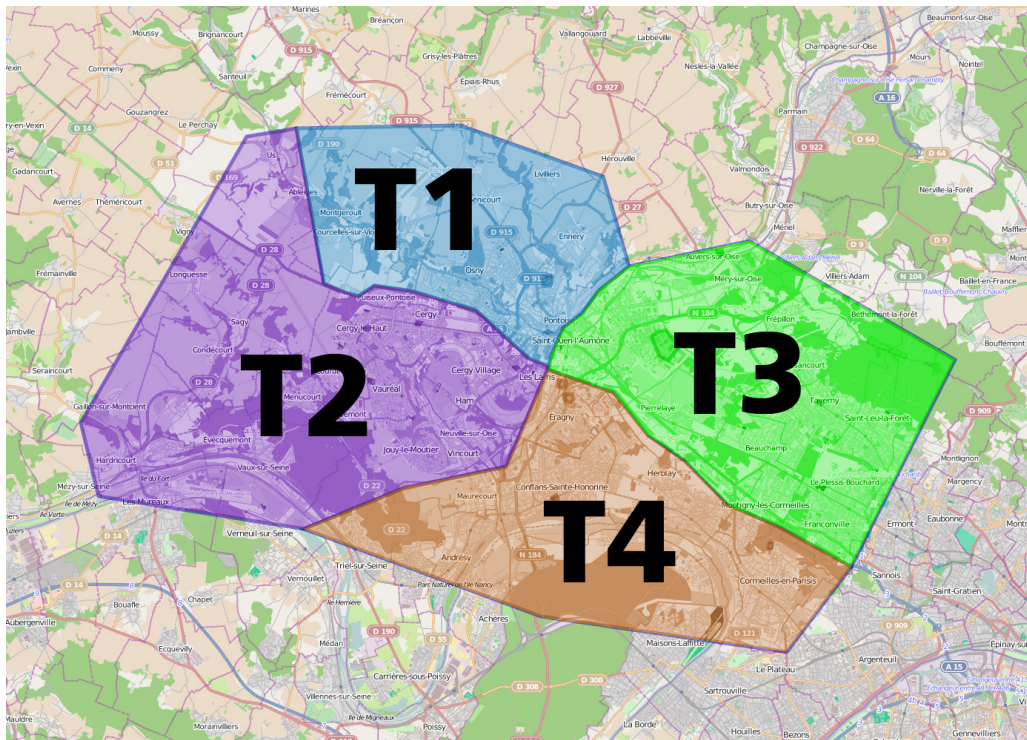


# Automatic Tariff Change



## Automatic Tariff Change on GPS or GPRS GeoFencing

With GeoFencing, based on GPS or GPRS, the change of the tariff, according the different zones, will be automatic. So when a taxi driver will pass from a zone to another, for example from T1 to T3, the switch of the tariff cost will change without the taxi driver action.





## OTA Tariff update

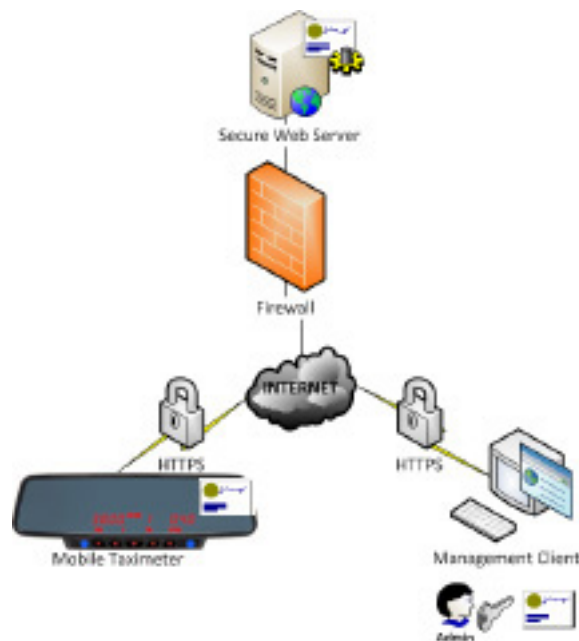
The M1 Plus taximeter updates its tariff and firmware using an Over-the-air (OTA) system, managed via web interface: **Digitax OTA Tariff Web Manager**.

The administrator uses the Web Manager to load updates, which the device automatically downloads and installs if needed. The system also implements a download-resume mechanism, in case of low or disturbed connection signal level.

The Web Manager also offer the possibility to categorize devices by groups, in order to provide different type of updates if needed.

## Secure connection

To ensure a secure communication over the internet, access to the OTA web server is protected using a secure **HTTPS** connection with two-way (client-server) SSL authentication. Every device or user that wants to access the website must provide a valid certificate issued by the certification authority (devices have it hard-coded into the firmware, the users are given an SSL token).

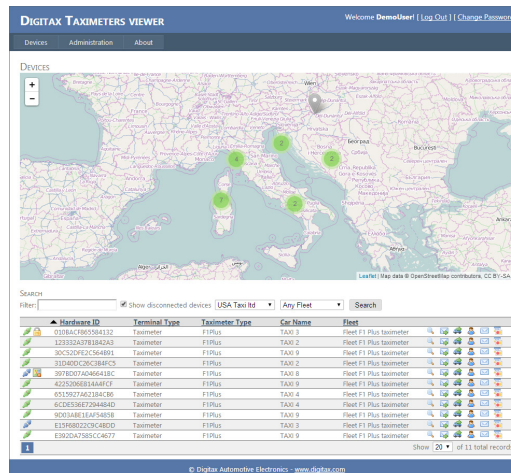


## Device Real-time Tracking

The M1 Plus taximeter can be used in conjunction with the Digitax DeviceTrack system: a control system that takes advantage of the GPRS communication capabilities of M1 Plus taximeter to provide taxi fleet administrators with a powerful tool to control, supervise and manage vehicles. Devices send and receive several kind of data to and from a central server, with the aim to perform real-time tracking of vehicles, reporting, moderation and more.

## Fleet Supervision

The DeviceTrack system is capable of processing a vast amount of information sent from the F1 OTA, including real-time position, direction and speed, driver shift and jobs history, in addition to every detail of the device itself.



The taximeter sends to the server all available data, including:

- Real-time device position, direction and speed, allowing to even retrace the path of a car in a particular moment or timeframe
- Jobs history, including the date, pickup and drop-off GPS coordinates, traveled distance, duration and fare amounts
- Driver shift history and details, including the breakdown of traveled distance, time and total fare amounts

This makes the M1 Plus taximeter an excellent tool for fleet supervisors who become capable of monitoring their fleet in real-time from an easy-to-use web interface.

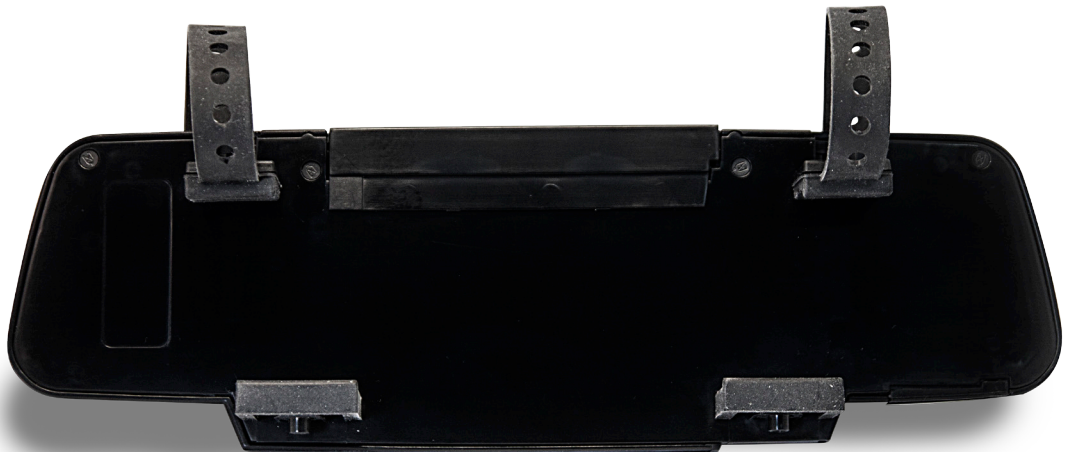
By using the web interface, and taking advantage of the bi-directional communication, it is also possible to use advanced security features like taximeter lock and unlock. Fleet supervisors can, in specific cases, lock the taximeter and completely prevent its unauthorized usage.

## Additional Extensibility

Digitax provides developers with access to the raw system data. This makes possible for customers with specific needs to develop custom solutions by using the already available data in conjunction to custom functionalities. It is possible, for example, to develop additional features such as advanced reporting and data analytics, or credit card payment systems.



# Views









Digitax Italy Headquarter

Via dell'Industria 16 - 62017 Porto Recanati (MC) - ITALY

Phone +39 071 7590984 r.a. - Fax +39 071 9797405

E-mail [info@digitax.com](mailto:info@digitax.com) - Web [www.digitax.com](http://www.digitax.com)

GPS: 43.412423,13.654716



**Microsoft** Partner

Silver OEM Hardware

**Digitax España**

C/Tomás Bretón, 7  
28045 – Madrid  
SPAIN

Phone +34 902366292

Fax +34 915271562

Web: [www.digitax-es.com](http://www.digitax-es.com)

E-mail: [info@digitax-es.com](mailto:info@digitax-es.com)

**Digitax Electronincs U.K.**

Smokehouse, 31  
Tanners Bank North Shields  
Tyne & Wear NE 30 1 JH  
ENGLAND

Phone +44 (0191) 296 1294

Fax +44 (0191) 257 8438

Web: [www.digitax.net](http://www.digitax.net)

E-mail: [digitaxuk@aol.com](mailto:digitaxuk@aol.com)

**Digitax Deutschland**

Taxitech Handelsges. mbh  
Sommerkamp 31a - 22335  
Hamburg  
GERMANY

Phone +49 40 555 05540

Fax +49 40 555 05530

Web: [www.digitax-de.com](http://www.digitax-de.com)

E-mail: [digitax@taxitech.de](mailto:digitax@taxitech.de)

**Digitax Nederland B.V.**

Postbus 84112  
3009 CC ROTTERDAM  
HOLLAND

Phone +31 10 4512121

Fax : +31 10 4500453

E-mail: [h.wittenberg@planet.nl](mailto:h.wittenberg@planet.nl)

E-mail: [info@digitax.nu](mailto:info@digitax.nu)

**Digitax CO. Mauritius**

P.O. box 775  
Bel Village  
MAURITIUS

Phone +230 234 4533/4936

Fax +230 234 5866

Web: [www.mtl-co.net](http://www.mtl-co.net)

E-mail: [mtlts@intnet.mu](mailto:mtlts@intnet.mu)